

SIEMENS
Ingenuity for life



Power monitoring made simple

Easy, reliable, cost-efficient

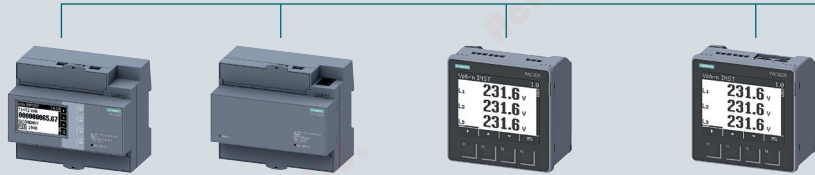
[siemens.com/powermonitoring](https://www.siemens.com/powermonitoring)

Thailand

Edition
2020

Hardware component

Industry



	7KM PAC2200	7KM PAC3200T	7KM PAC3120 new	7KM PAC3220 new
Installation type				
Front mounting Standard mounting rail screw mounting	- ■ -	- ■ -	■ - -	■ - -
Withdrawable Fixed-mounted	- -	- -	- -	- -
Measuring connection				
Direct measurement	■	-	-	-
Transformer measurement	■	■	■	■
Multichannel measuring system	-	-	-	-
Suitable transformers				
Window-type current transformers	■	■	■	■
Folding transformer	■	■	■	■
Integrated transformer	-	-	-	-
Commissioning				
MID version	■	-	-	-
Max. input voltage L-L/L-N	480 V/277 V	480 V/277 V	690 V/400 V	690 V/400 V
Transformer connection version	x/1 A or x/5 A	x/1 A or x/5 A	x/1 A or x/5 A	x/1 A or x/5 A
Direct connection version	65 A	-	-	-
DC power supply unit with extra-low voltage version	-	-	22 ... 65 V DC	22 ... 65 V DC
Single-phase counter version	■	-	-	-
Electrically isolated voltage inputs	-	-	-	-
Version without display (for web interface)	-	■	-	-
Evaluation				
Measured quantities				
Average value of measured values	■	■	■	■
Voltage, current, frequency	■	■	■	■
Power, power factor	■	■	■	■
Energy measurement				
Daily energy storage	60 days	60 days	60 days	60 days
Apparent Active Reactive energy cos φ	■ ■ ■ -	■ ■ ■ -	■ ■ ■ -	■ ■ ■ -
Distortion factor THD (voltage, current)	-	■	■	■
Harmonics (voltage, current)	-	-	-	-
Phase angle/phase chart	-	-	-	-
Load profile recording	-	-	-	-
Flicker acc. to IEC 61000-4-15	-	-	-	-
Monitoring functions				
Operating hours counter	■	■	■	■
Limit monitoring	-	■	■	■
Logic functions	-	■	■	■
Event log	-	-	-	-
Gateway function	-	-	-	-
Reporting acc. to EN 50160	-	-	-	-
Integrated fault recorder	-	-	-	-
Integrated communication interfaces				
Digital inputs/digital outputs	1/1	1/1	2/2	2/2
S0-Interface	■	■	■	■
M-Bus	■	-	-	-
RS485 (Modbus RTU)	■	-	■	-
Ethernet with Modbus TCP	■	■	-	■
BACnet	-	-	-	-
More information				
Catalog LV 10	See page 10/18	See page 10/18	See page 10/18	See page 10/18

¹⁾ For devices with AC/DC wide-voltage power supply unit

Industry

Buildings and infrastructure



7KM PAC4200	7KM PAC5100	7KM PAC5200	7KT PAC1200	7KT PAC1600	SEM3
■ - -	■ ■ -	■ ■ -	- ■ -	- ■ -	- - ■
- -	- -	- -	- -	- -	- -
-	-	-	■	■	-
■	■	■	■	■	-
-	-	-	■	-	■
■	■	■	■	■	■
■	■	■	■	■	■
-	-	-	■	-	■
690 V/400 V ¹⁾ x/1 A or x/5 A	690 V/400 V x/1 A or x/5 A	690 V/400 V x/1 A or x/5 A	400 V/230 V x/5 A	400 V/230 V x/5 A	480 V/277 V 50 ... 1200 A/0.1 A
-	-	-	40/63 A	63/80 A	-
22 ... 65 V DC	-	-	-	-	-
-	-	-	■	■	■
-	■	■	-	-	-
-	■	■	■	-	■
■	-	-	-	-	-
■	■	■	■	■	■
■	■	■	■	■	■
-	-	-	-	-	-
■ ■ ■ ■	■ ■ ■ ■	■ ■ ■ ■	- ■ ■ -	■ ■ ■ -	■ ■ ■ ■
■	■	■	-	-	-
2nd to 64th	2nd to 40th	2nd to 40th	-	-	-
■	■	■	-	-	■
■	-	■	-	-	-
-	-	■	-	-	-
■	-	-	-	■	-
■	■	■	-	■	-
■	■	■	-	■	■
> 4000 events	■	■	-	-	■
■	-	-	-	-	-
■	-	■	-	-	-
■	-	-	-	-	-
2/2	0/2	0/2	-	1/1	2/1
■	-	-	-	■	-
-	-	-	-	■	-
-	-	-	-	■	■
■	■	■	■	-	■
-	-	-	-	-	■

See page 10/18

See page 10/18

See page 10/18

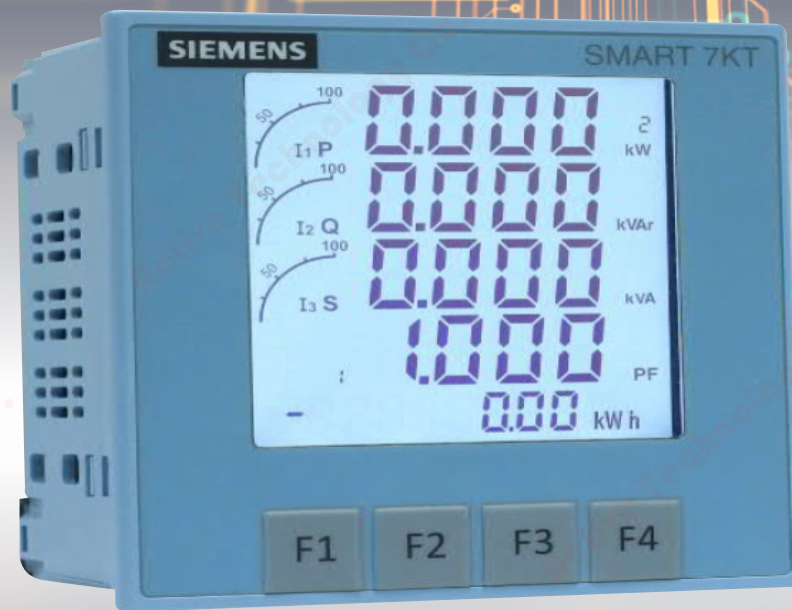
See page 10/18

See page 10/18

See page 10/18

SIEMENS

Ingenuity for life



SMART 7KT Multi Function Meter

Smart metering solution for
all your load feeders

With the increasing awareness of Energy conservation, more and more electrical installations, be it industrial, residential or commercial buildings, require precise and reliable energy monitoring.

Multifunction Meters have evolved from simple measuring devices to a critical component of Energy Management Systems.

The SMART 7KT Multifunction Meter is the latest addition to the wide portfolio of Measuring Devices and Energy Management Software from Siemens.

SMART 7KT (Modbus RTU)



Graphical LCD Screen
 Suitable for standard 96*96 panel mounting
 Accuracy Class1 for Active Energy as per IEC62053-21
 Total Harmonics Distortion- %THD- Voltage & Current
 1 DI- Digital Input for Status monitoring
 CT Secondary- 1A or 5A
 ON Hours Counter

General Features

MLFB	7KT0310
Mounting Type	Panel
Terminal	Screw Type
Dimension	96 x 96 x 50 mm
IP Protection	IP65 On Front When Installed
Display Type	LCD with Bar Graph display
Temperature	-20° to +60° C
Humidity	0% to 95% without moisture consideration
Password Protection	Yes

Measuring Range

Nominal Current	3 x 0 - 5 A with max. 20% Overload
CT Primary	1 A - 10000 A
CT Secondary	Selectable - 1 A or 5 A
Input Voltage L-L/L-N	480 V / 276 V
Rated Frequency	50/60 Hz
Network	1P2W, 3P3W, 3P4W

Control Supply

Input voltage range	95 - 240 V AC ± 10%
Consumption	8 VA max
Frequency	45 - 65 Hz

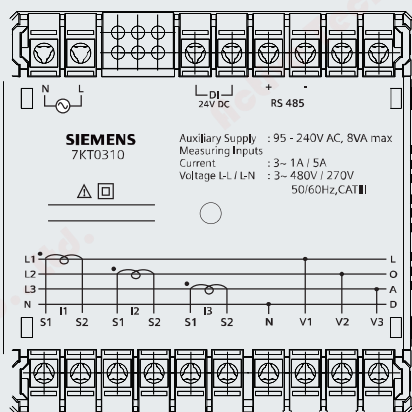
Display Parameters & Range :

Voltage (Phase and Average)	Yes
Current (L1, L2, L3)	Yes
Frequency	Yes
Neutral Current (Instantaneous on Display)	Yes
% THD - I/V	Yes
Power (Active / Reactive / Apparent)	Yes
Min / Max Values of Power	Yes
Power Factor (Phase wise & Average)	-1.00 to + 1.00
Phase Angle	Yes
Energy (Active, Reactive, Apparent) (Instantaneous, Class 1)	Yes
Maximum Demand	Yes
ON Hour Counter	Yes
Pollution Degree	II
Overvoltage Category	III

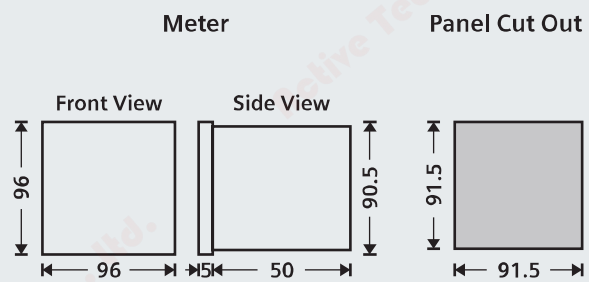
System Communication

Communication Interface	RS 485 Interface, Modbus RTU Protocol
Digital Input (DI) / Digital Output (DO)	1 DI

Terminal Connection



Dimensions (in mm)





บริษัท ซีเมนส์ จำกัด

อาคารชาภูมิอิสระทาวเวอร์ 2 ชั้น 32

ถนนเพชรบุรีตัดใหม่ แขวงบางกะปิ

เขตห้วยขวาง กรุงเทพมหานคร 10310 ประเทศไทย

โทร +66 2715 4000



Email : electricalproducts.th@siemens.com

Website : www.siemens.co.th

The information provided in this catalog contains merely general descriptions or characteristics of performance which in case of actual use do not always apply as described or which may change as a result of further development of the products. An obligation to provide the respective characteristics shall only exist if expressly agreed in the terms of contract. Availability and technical specifications are subject to change without notice.

All product designations may be trademarks or product names of Siemens AG or supplier companies whose use by third parties for their own purposes could violate the rights of the owners.

สอบถามและสั่งซื้อผลิตภัณฑ์ ติดต่อร้านค้าหรือตัวแทนจำหน่าย



Active
TECHNOLOGY CO.,LTD.

ACTIVE TECHNOLOGY CO., LTD

25/236 Soi Samaedum 17, Samaedum,
Bangkhuntian, Bangkok 10150 Thailand

Tel.+66 (0)9 9262 6556, + 66 (0)6 2782 6559

E-mail : sales@ac-tt.co.th

Line ID: [activetech](https://www.line.me/tv/active-tech)

www.ac-tt.co.th