

DYH

BY

ACTIV1 TECHNOLOGY CO., LTD.



DYH by ACTIVE TECHNOLOGY CO., LTD

Introductions of cast-resin type instrument transformer

- **Application**

Resin-casting instrument transformers are used in electrical measurement and electrical protection for indoor products of 3.6kV~40.5 kV at the frequency of 50 or 60 Hz.

- **Construction character**

The transformers are molded in high quality resin so that it is resistant to pollution and humidity, and suitable for tropical installation. Easy maintenance: need to clean regularly only.

The transformers can be mounted in any position. Light weight and small dimensions are the main features of this design.

The secondary terminals of current transformer are located in recesses either on one or both sides on the base of the transformer, hereby giving two connection possibilities.



Advantages of cast-resin type instrument transformer

- Technical performance can meet the newest version IEC and the Chinese national standard
- CT can realize the accuracy class 0.2S and $FS \leq 5$
- Total-enclosed type instead of semi-enclosed type
- Having a fuse in PT's casting body
- Having the high dynamic and thermal stability factor of CT PT are with
- three-phase resonance prevention character
- Some products can meet the requirements for high altitude area
- Control the verification temperature of the condensate of epoxy resin
- Advanced equipments and crafts ensure the products' quality and small partial discharge
- Beautiful shape, shining surface



2011 Edition

LZZBJ9-12/150 LZZBJ9-12/185

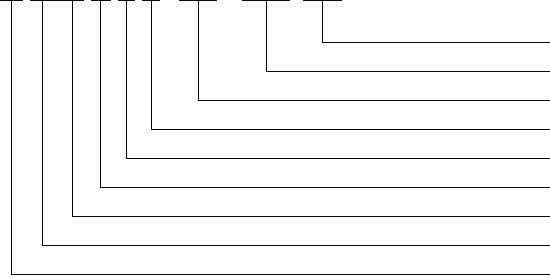
CURRENT TRANSFORMER





■ Type description

LZZBJ9-12/150 (185) □



Structure code
Nominal Width
Highest voltage for equipment (kV)
Design No.
Reinforced type
With protective class
Casting type
Post type
Current transformer

■ Technical data

The current transformers are in accordance with GB1208-2006 and IEC60044-1:2003 standards.

Rated insulation level: 12/42/75kV

Rated frequency: 50Hz, 60Hz

Rated secondary current: 5A, 1A

We can supply high precision current transformers of class 0.2S or 0.5S for measuring.

■ Table of technical data for prior choice

Rated Primary current(A)	LZZBJ9-12/150b/2		LZZBJ9-12/150b/4			
	0.5-15VA 5P10-15VA		0.5-15VA 5P10-15VA		0.5-15VA 5P10-15VA 5P20-15VA	
	Ith kA/s	Idyn kA	Ith kA/s	Idyn kA	Ith kA/s	Idyn kA
30,40			12/1	30		
50,60	7/1	18	17/1	42.5		
75	12/1	30	25/3	63		
100	15/1	37.5	25/3	63	7/1	18
150,160	21/1	52.5	25/3	63	15/1	37.5
200,250	25/3	63	25/3	63	25/1	63
300,315	31.5/3	80	40/3	100	25/2	63
400	31.5/3	80	40/3	100	31.5/2	80
500,600,630	31.5/3	80	40/3	100	31.5/3	80
750,800,1000,1250	31.5/3	80	45/3	112.5	40/3	100

Rated Primary current(A)	LZZBJ9-12/185b/2 (h/2)		LZZBJ9-12/185b/4(h/4)			
	0.5-15VA 5P10-15VA		0.5-15VA 5P10-15VA		0.5-15VA 5P10-15VA 5P20-20VA	
	Ith kA/s	Idyn kA	Ith kA/s	Idyn kA	Ith kA/s	Idyn kA
30,40	12/1	30	15/1	37.5		
50,60	21/1	52.5	28/1	70	7/1	18
75	25/2	63	28/1	70	12/1	30
100	25/3	63	31.5/2	80	21/1	52.5
150,160	25/3	63	31.5/3	80	25/1	63
200,250	31.5/3	80	40/3	100	25/3	63
300,315	40/3	100	40/3	100	31.5/3	80
400	40/3	100	40/3	100	31.5/3	80
500,600,630	40/3	100	40/3	100	40/3	100
750,800,1000,1250	45/3	112.5	45/3	112.5	45/3	112.5
1500,1600,2000	50/3	125	50/3	125	50/3	125
2500	63/3	160	63/3	160	63/3	160

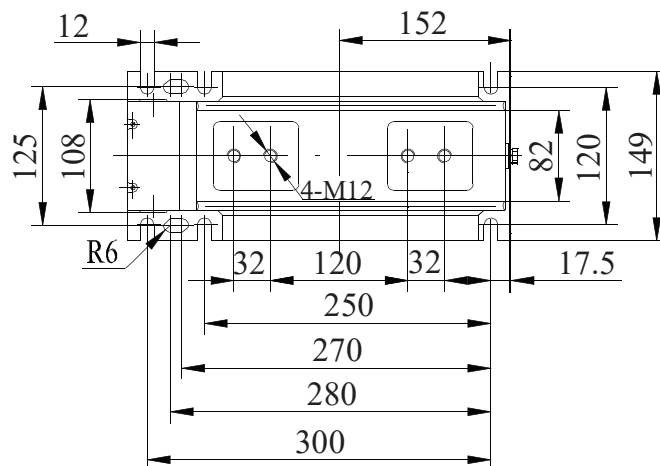
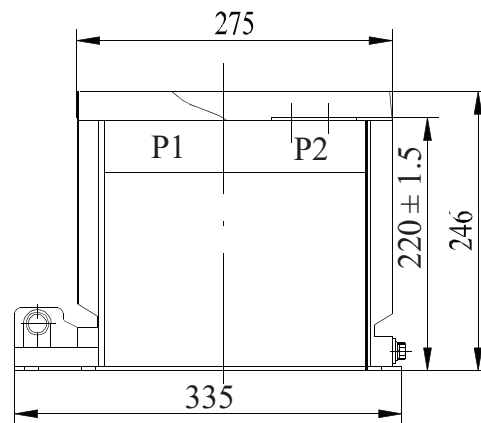


- Notes:** 1. If the thermal current (I_{th}) is no less than 2s, the dynamic current (I_{dyn}) can be up to 3.2times the I_{th} .
2. Any special requirements can be negotiated with us.

■ Outline drawing

LZZBJ9-12/150b/2

Not more than 6 secondary terminals

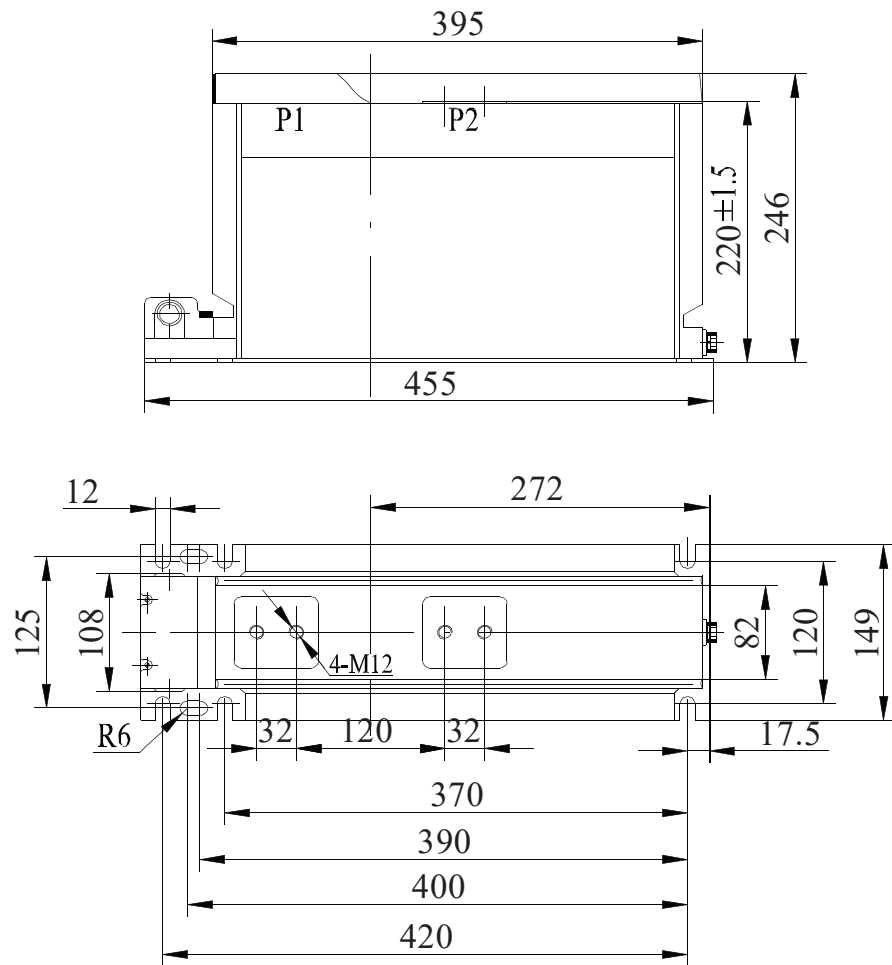




Outline drawing

LZZBJ9-12/150b/4

Not more than 6 secondary terminals

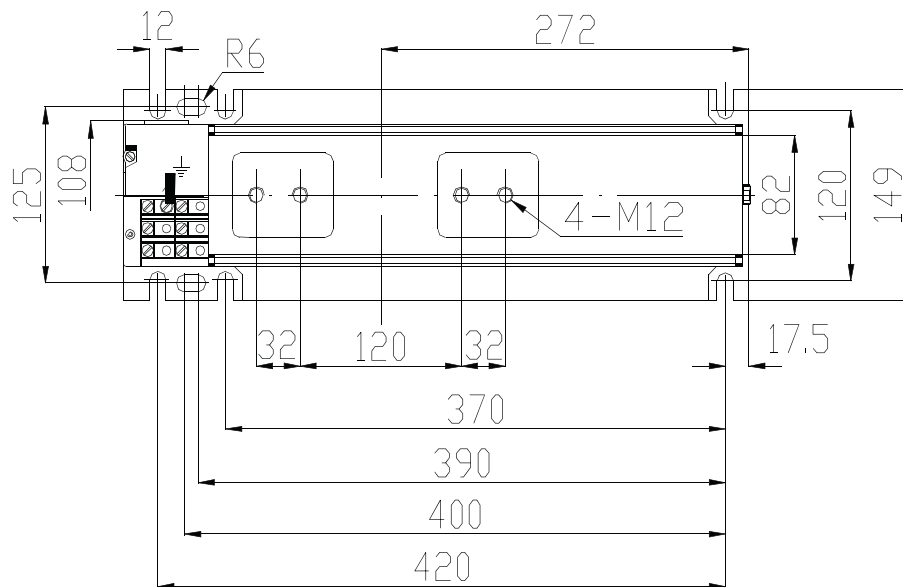
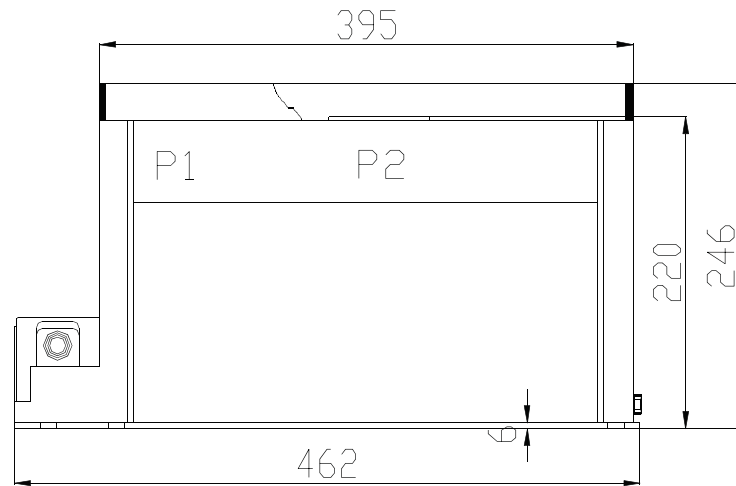




■ Outline drawing

LZZBJ9-12/150b/4

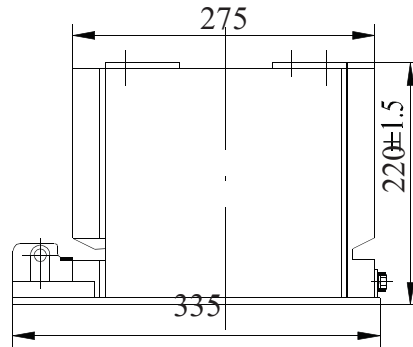
For 9-12 secondary terminals



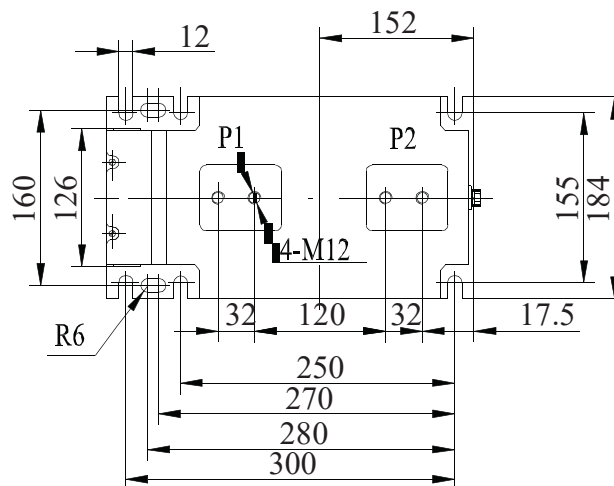


Outline drawing

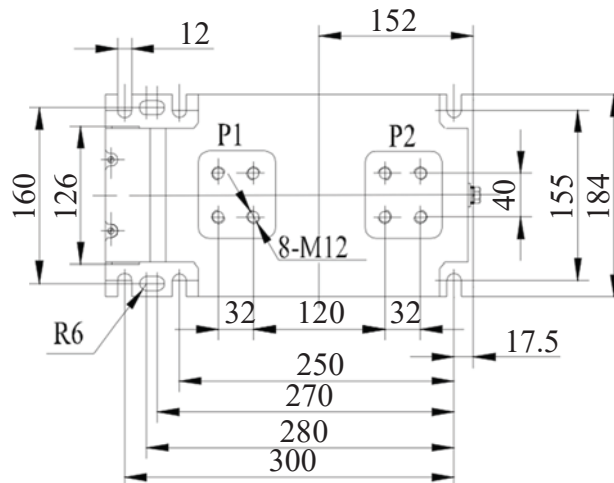
Not more than 8 secondary terminals



LZZBJ9-12/185b/2



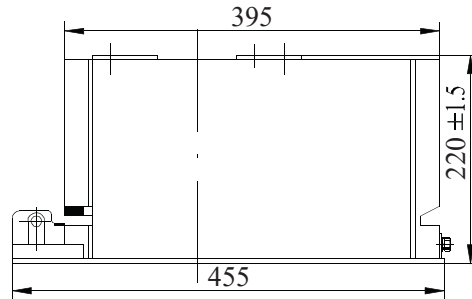
LZZBJ9-12/185h/2



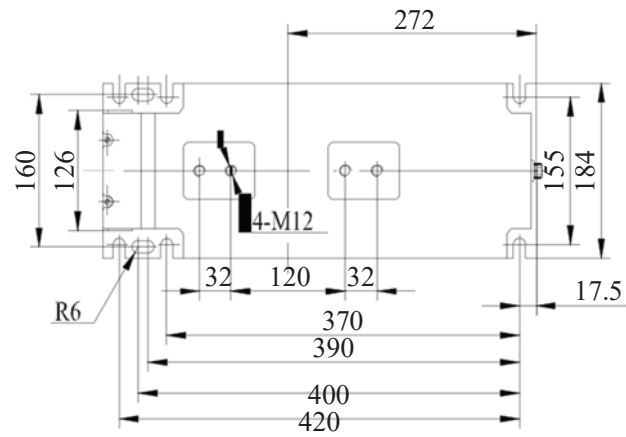


■ Outline drawing

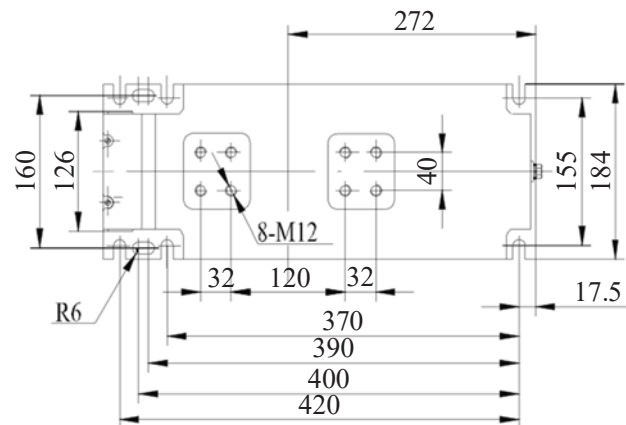
Not more than 8 secondary terminals



LZZBJ9-12/185b/4



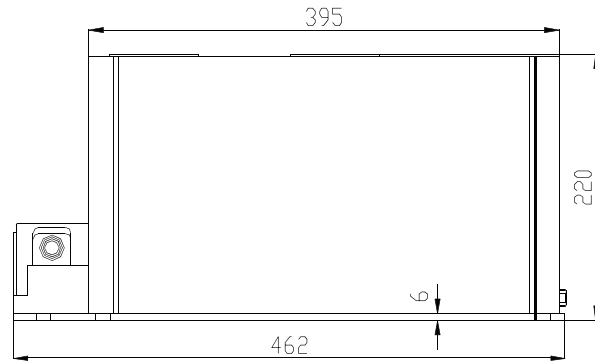
LZZBJ9-12/185h/4



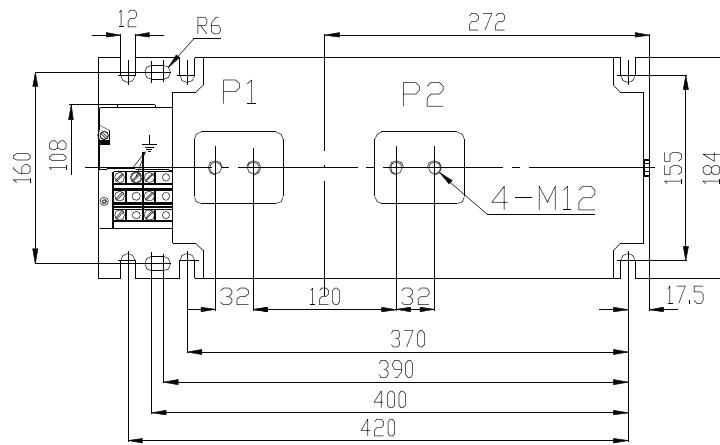


Outline drawing

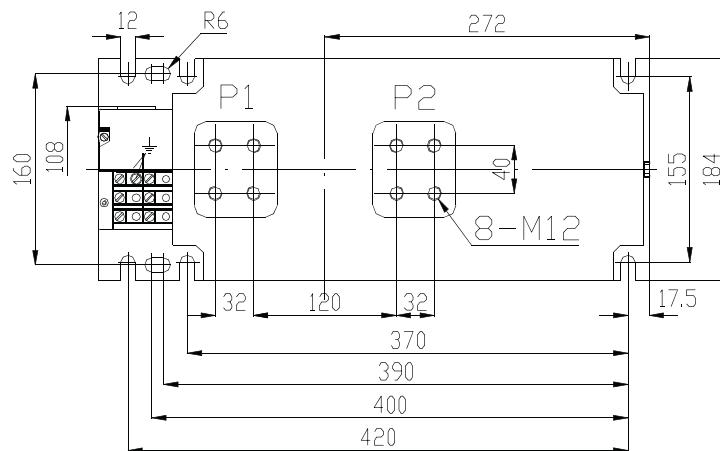
For 9-12 secondary terminals



LZZBJ9-12/185b/4



LZZBJ9-12/185h/4





2011 Edition

LZZB9-24/178

CURRENT TRANSFORMER

LZZB9-24/178/282b

LZZB9-24/178/282h



LZZB9-24/178/382b

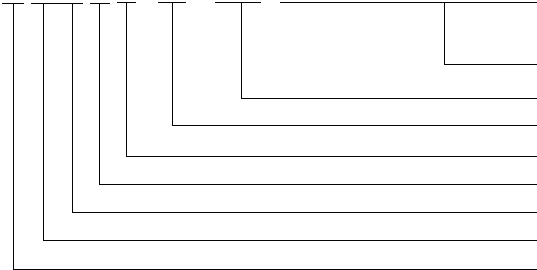
LZZB9-24/178/407h





■ Type description

LZZB9-24/178/282b(282h 382b 407h)



Structure code
Nominal Width
Highest voltage for equipment (kV)
Design No.
With protective class
Casting type
Post type
Current transformer

■ Technical data

The current transformers are in accordance with IEC60044-1:2003 standards.

Rated insulation level: 24/50/125kV

Rated frequency: 50Hz, 60Hz

Rated secondary current: 5A, 1A

We can supply high precision current transformers of class 0.2S or 0.5S for measuring.



Table of technical data for prior choice

Rated Primary current(A)	LZZB9-24/178/282b		LZZB9-24/178/382b			
	0.5-15VA 5P10-15VA		0.5-15VA 5P10-15VA		0.5-15VA 5P10-15VA 5P20-15VA	
	Ith kA/s	Idyn kA	Ith kA/s	Idyn kA	Ith kA/s	Idyn kA
30,40	7/1	18	15/1	38	4.5/1	11
50,60	15/1	38	21/1	53	7/1	18
75	21/1	53	31.5/1	80	15/1	38
100	31.5/1	80	31.5/2	80	21/1	53
150,160	31.5/2	80	31.5/3	80	31.5/1	80
200,250	31.5/3	80	31.5/3	80	31.5/2	80
300,315,400,500,600,630,750,800,	31.5/3	80	31.5/3	80	31.5/3	80
1000,1200,1250	45/3	112	45/3	112	45/3	112

Rated Primary current(A)	LZZB9-24/178/282h		LZZB9-24/178/407h			
	0.5-15VA 5P10-15VA		0.5-15VA 5P10-15VA		0.5-15VA 5P10-15VA 5P20-20VA	
	Ith kA/s	Idyn kA	Ith kA/s	Idyn kA	Ith kA/s	Idyn kA
30,40	7/1	18	15/1	38	4.5/1	11
50,60	15/1	38	21/1	53	7/1	18
75	21/1	53	31.5/1	80	15/1	38
100	31.5/1	80	31.5/2	80	21/1	53
150,160	31.5/2	80	31.5/3	80	31.5/1	80
200,250	31.5/3	80	31.5/3	80	31.5/2	80
300,315,400,500,600,630,750,800,	31.5/3	80	31.5/3	80	31.5/3	80
1000,1200,1250	45/3	112	45/3	112	45/3	112
1500,1600,2000	50/3	125	50/3	125	50/3	125
2500	63/3	160	63/3	160	63/3	160

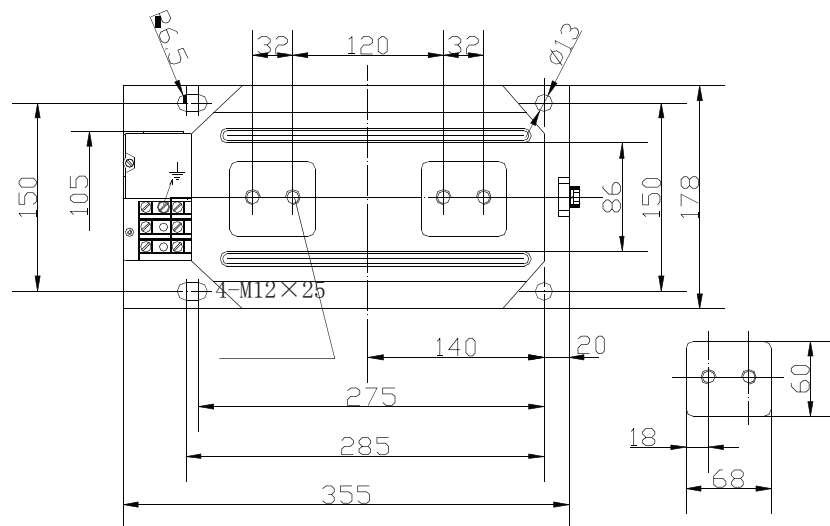
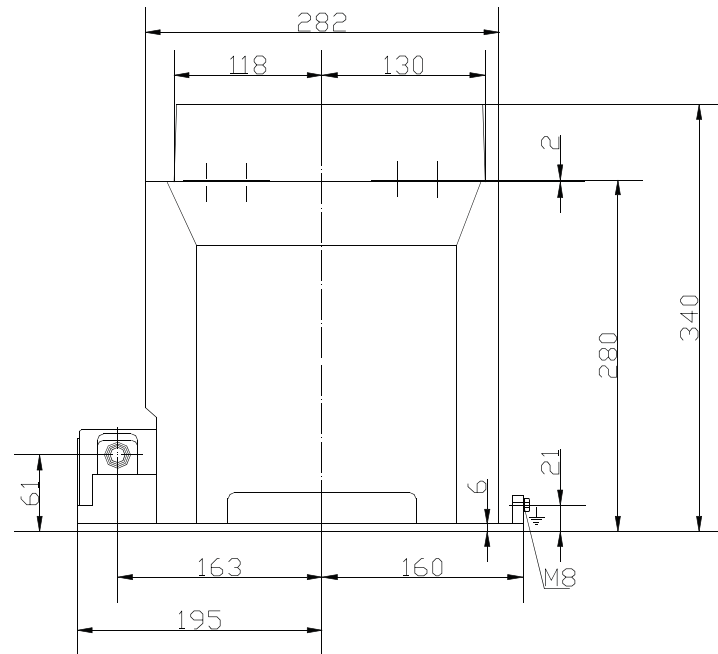
Notes: 1. If the thermal current (Ith) is no less than 2s, the dynamic current (Idyn) can be up to 3.2times the Ith.

2. Any special requirements can be negotiated with us.



■ Outline drawing

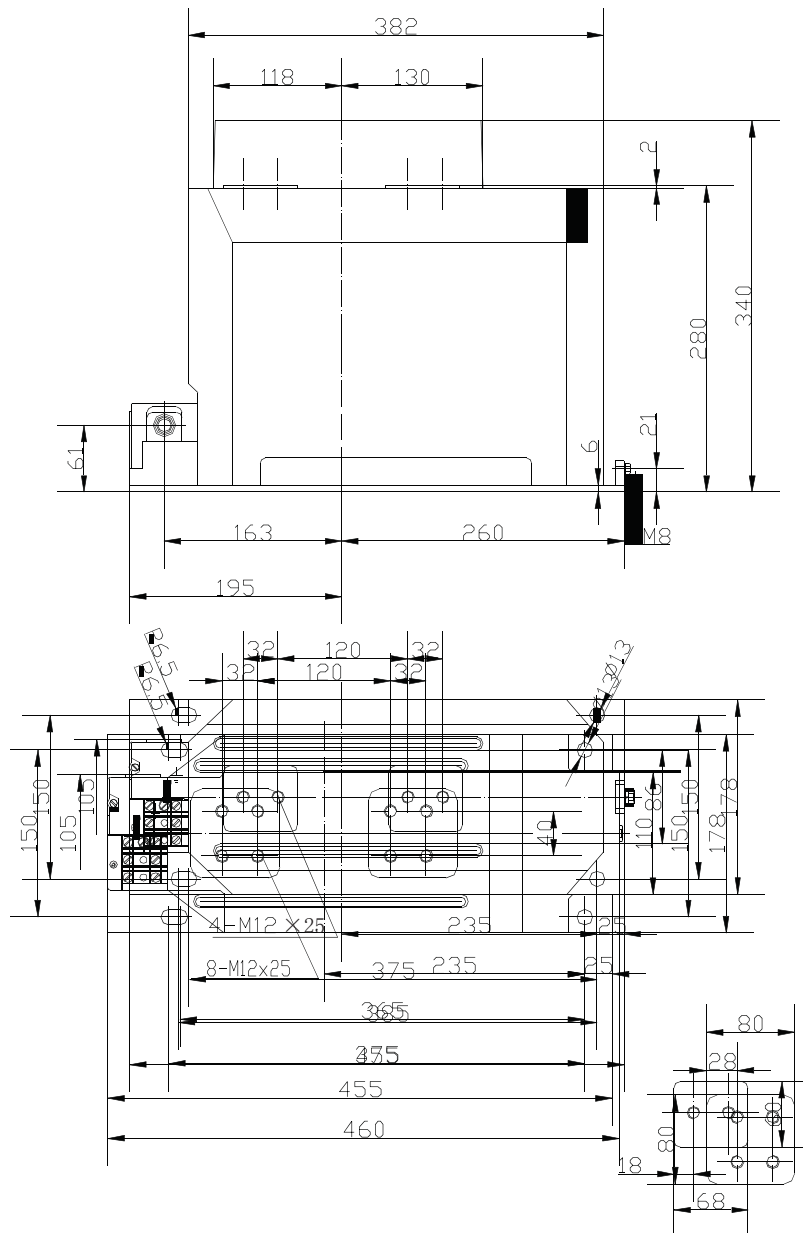
LZZB9-24/178/282b





■ Outline drawing

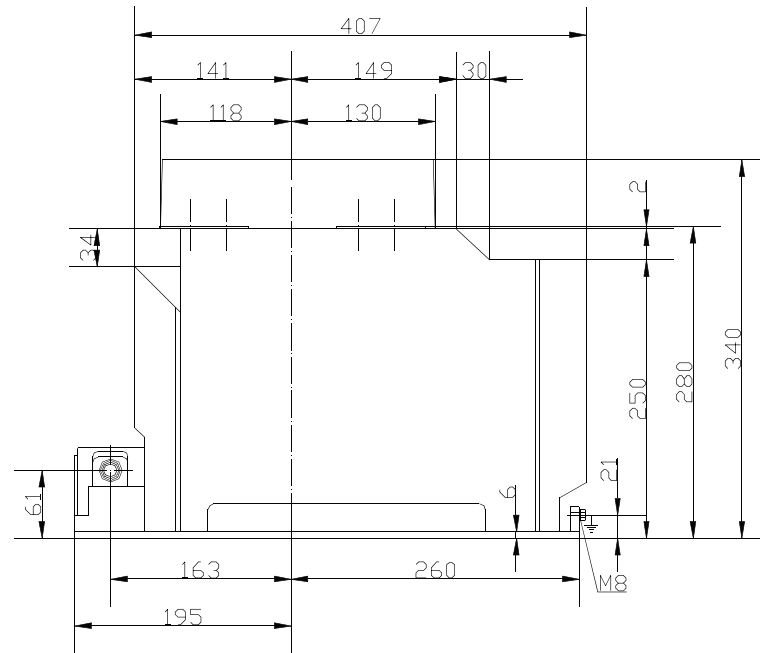
LZZB9-24/178/382b





■ Outline drawing

LZZB9-24/178/407h





2011 Edition

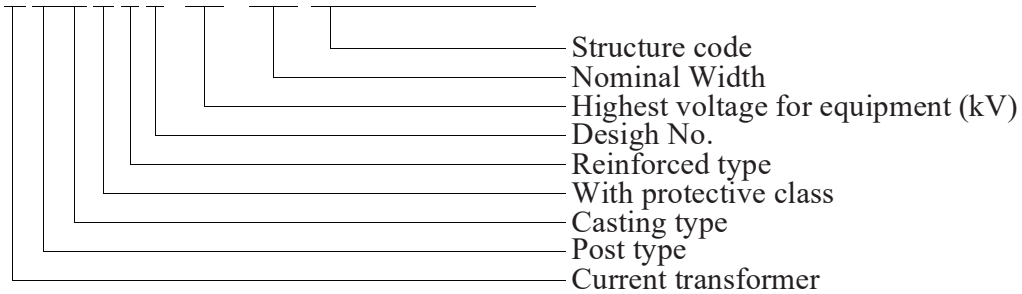
LZZBJ9-36/250W3b(h,l)m CURRENT TRANSFORMER





■ Type description

LZZBJ9-36/250W3b(h,l)m



■ Technical data

The current transformers are in accordance with IEC60044-1:2003 standards.

Rated insulation level: 36/70/170kV

Rated frequency: 50Hz, 60Hz

Rated secondary current: 5A, 1A

We can supply high precision current transformers of class 0.2S or 0.5S for measuring.



■ Table of technical data for prior choice

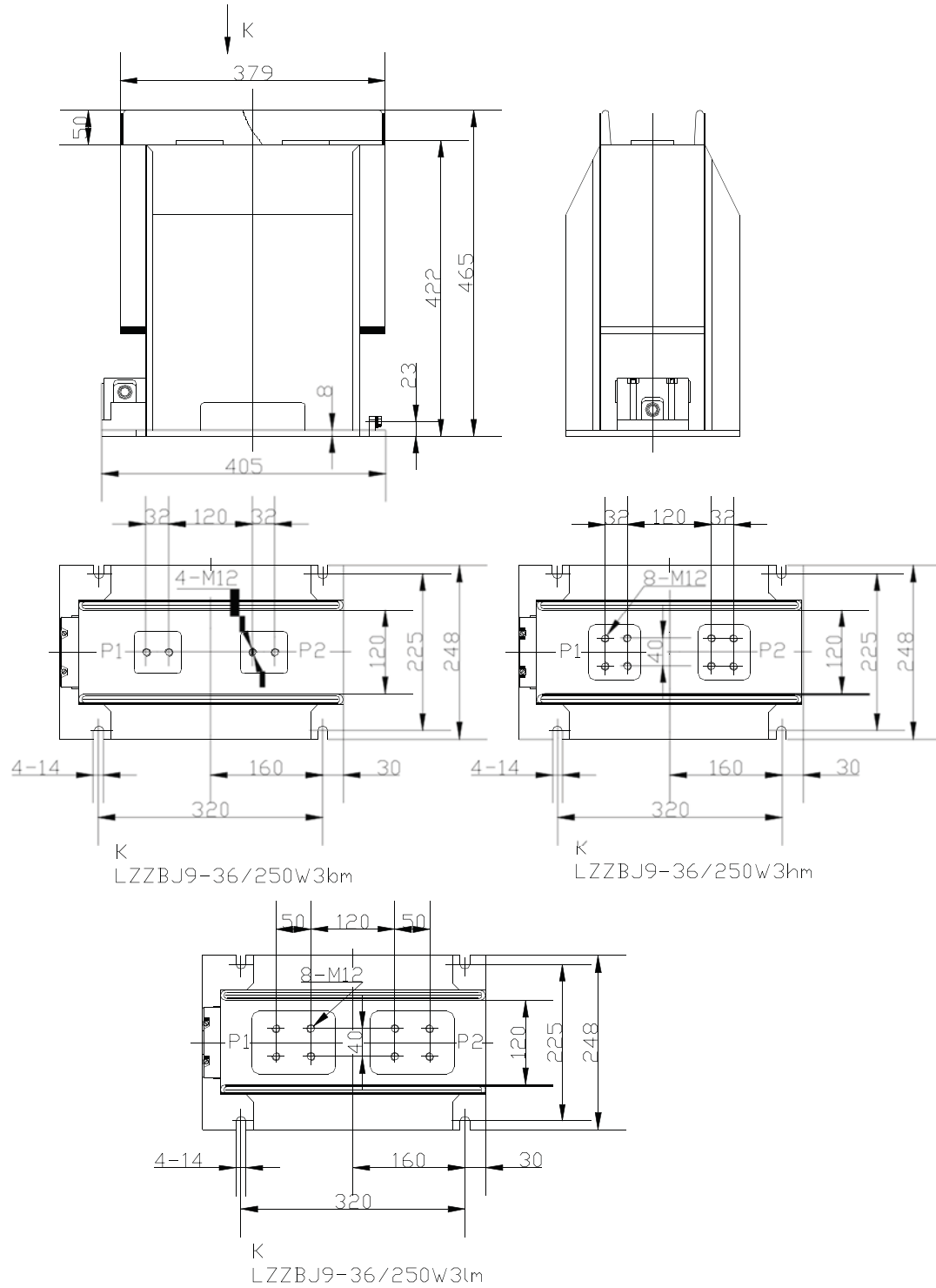
Rated Primary current(A)	LZZBJ9-36/250W3b(h,l)m							
	0.2-15VA		0.2-15VA 5P10-15VA		0.2-15VA 5P20-30VA		0.5-15VA 5P10-15VA 5P20-30VA	
	Ith kA/s	Idyn kA	Ith kA/s	Idyn kA	Ith kA/s	Idyn kA	Ith kA/s	Idyn kA
15	4.5/1	11.5	4.5/1	11.5				
20	6/1	15	6/1	15				
30,40	10/1	25	10/1	25				
50,60	17/1	42.5	17/1	42.5	10/1	25	7/1	18
75	25/1	63	25/1	63	17/1	42.5	10/1	25
100	25/2	63	25/2	63	25/1	63	17/1	42.5
150	25/3	63	25/3	63	25/2	63	25/1	63
200,250	25/3	63	25/3	63	25/3	63	25/2	63
300	31.5/4	80	31.5/4	80	25/3	63	25/3	63
400	31.5/4	80	31.5/4	80	31.5/4	80	31.5/4	80
500,600	31.5/4	80	31.5/4	80	31.5/4	80	31.5/4	80
750~1250	31.5/4	80	31.5/4	80	31.5/4	80	31.5/4	80
1500,2000	31.5/4	80	31.5/4	80	31.5/4	80	31.5/4	80
2500	31.5/4	80	31.5/4	80	31.5/4	80	31.5/4	80
3000,3150	31.5/4	80	31.5/4	80	31.5/4	80	31.5/4	80

- Notes:** 1. If the thermal current (Ith) is no less than 2s, the dynamic current (Idyn) can be up to 3.2times the Ith.
2. Any special requirements can be negotiated with us.



Outline drawing

Not more than 10 secondary terminals





2011 Edition

LMZC-0.5 LXZK2

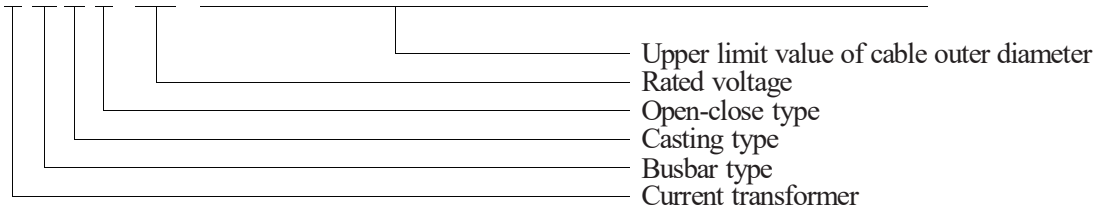
CURRENT TRANSFORMER





■ Type description

LMZC-0.5- ϕ 80(ϕ 100, ϕ 120, ϕ 140, ϕ 160, ϕ 180, ϕ 250)



■ Technical data

The current transformers are in accordance with GB1208-2006 and IEC60044-1:2003 standards.

Rated insulation level: 0.72/3kV

Rated frequency: 50Hz, 60Hz

Rated secondary current: 5A, 1A

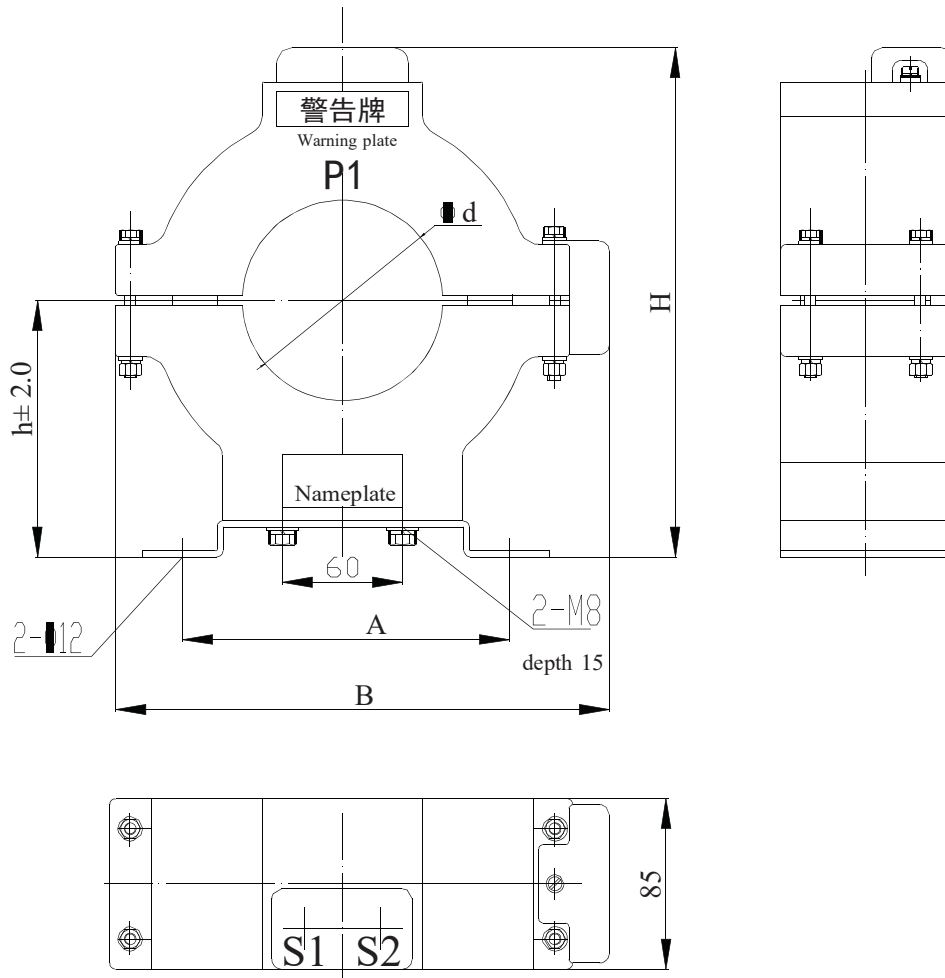
■ Table of technical data for prior choice

Type	Specification
LMZC-0.5 LXZK2	50~75/1 (5)A Class 10P10 1VA
	100/1 (5)A Class 10P10 2.5VA
	150~400/1(5) A Class 10P10 5VA

Note: Any special requirements can be negotiated with us.



Outline drawing



Type	d	h	H	A	B
LMZC-0.5 (LXZK2)	80	118	238	160	240
	100	128	258	160	250
	120	138	278	180	280
	140	165	318	200	300
	160	175	338	220	330
	180	185	358	240	350
	250	245	480	250	460



2011 Edition

LXZ3-φ300

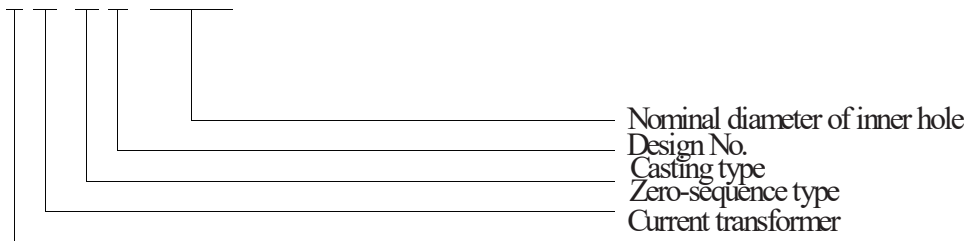
CURRENT TRANSFORMER





■ Type description

LXZ3- ϕ 300



■ Construction Features

These series current transformers are epoxy resin vacuum casting. They have good electrical, mechanism performance property, damp proof and dirt proof ability. The shape is beautiful and it is easy to be installed.

■ Technical data

The current transformers are in accordance with GB1208-2006 and IEC60044-1:2003 standards.

Rated insulation level: 0.72/3kV

Rated frequency: 50Hz, 60Hz

Rated secondary current: 5A, 1A

Secondary terminals: S1, S2



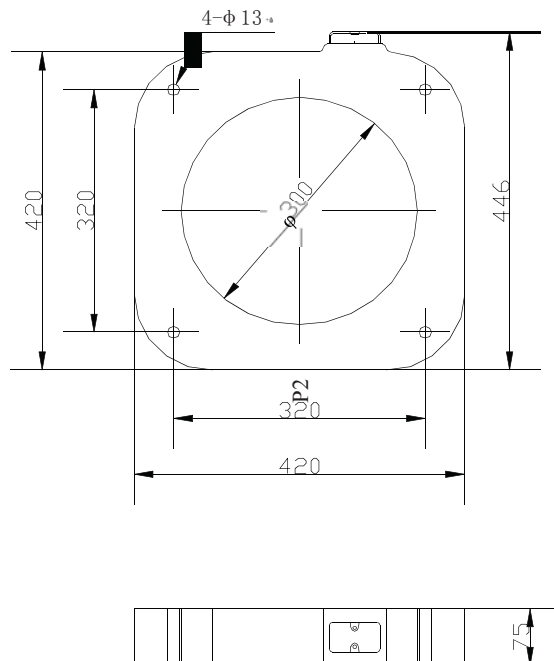
■ Table of technical data for prior choice

Type	Ratio (A)	Accuracy class and combination	Rated output (VA)
LXZ3-Φ 300	50/1	10P10	2.5
	50/5	10P10	1
	75/1	10P10	3.75
	75/5	10P10	2.5
	100/1	10P10	5
	100/5	10P10	3.75
	150/1(5)	5P10	7.5
	200/1(5)	5P10	10
	300/1(5)	5P10	15
	400/1(5)	5P10	20
	500/1(5)	5P10	25
	600~1250/1(5)	5P10	30

Note: Any special requirements can be negotiated with us.

■ Outline drawing

LXZ3-Φ 300





2011 Edition

LMBF-0.5/300×500

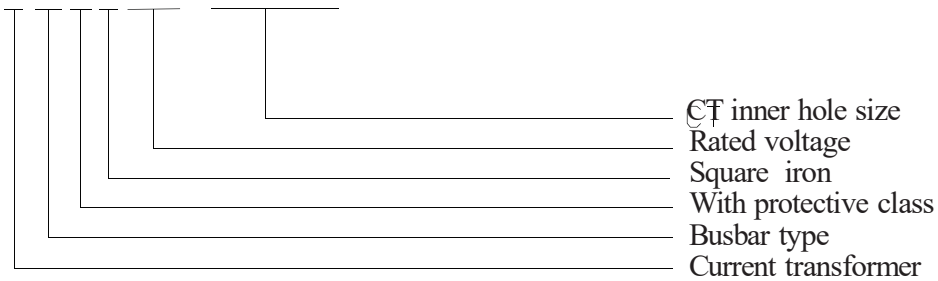
CURRENT TRANSFORMER





■ Type description

LMBF-0.5/300×500



■ Construction Features

These series current transformers are epoxy resin vacuum casting. They have good electrical, mechanism performance property, damp proof and dirt proof ability. The shape is beautiful and it is easy to be installed.

■ Technical data

The current transformers are in accordance with GB1208-2006 and IEC60044-1:2003 standards.

Rated insulation level: 0.72/3kV

Rated frequency: 50Hz, 60Hz

Rated secondary current: 5A, 1A



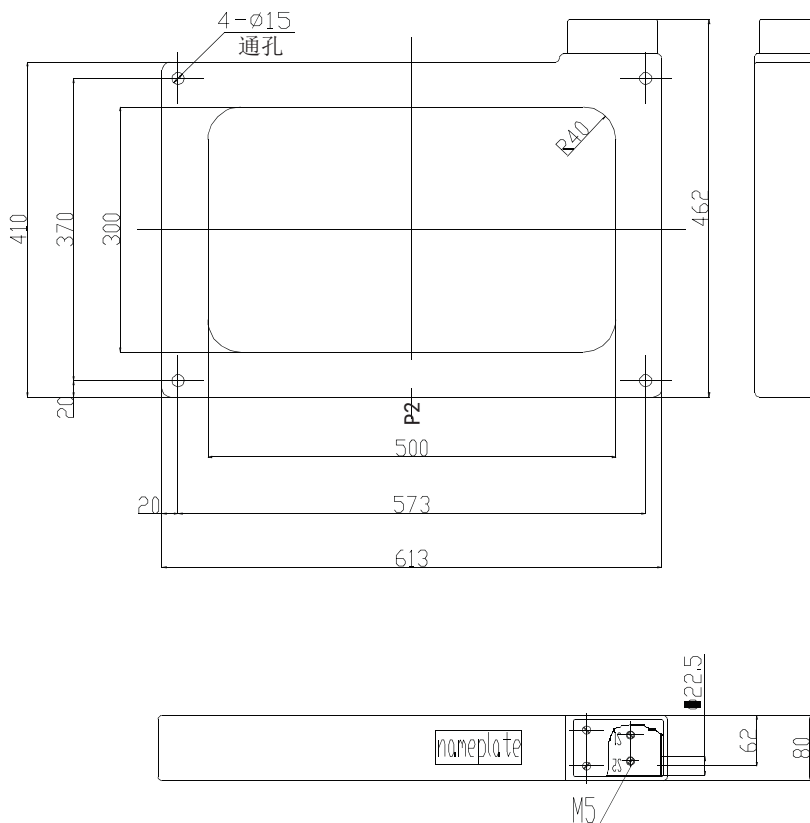
■ Table of technical data for prior choice

Type	Rated Primary current(A)	Class	Rated output (VA)
LMBF-0.5/300*500	50/1	10P10	1
	75/1	10P10	1
	100/1	10P15	2.5
	100/5	10P10	2.5
	150/1	10P15	3.75
	150/5	10P10	3.75

Note: Any special requirements can be negotiated with us.

■ Outline drawing

LMBF-0.5/300×500





2011 Edition

LMZ255-80-160

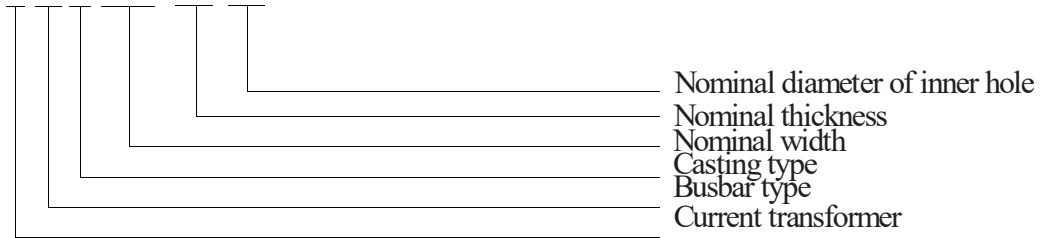
CURRENT TRANSFORMER





■ Type description

LMZ255-80-160



■ Construction Features

These series current transformers are epoxy resin vacuum casting. They have good electrical, mechanism performance property, damp proof and dirt proof ability. The shape is beautiful and it is easy to be installed.

■ Technical data

The current transformers are in accordance with GB1208-2006 and IEC60044-1:2003 standards.

Rated insulation level: 0.72/3kV

Rated frequency: 50Hz, 60Hz

Rated secondary current: 5A, 1A



■ Table of technical data for prior choice

Type	Ratio (A)	Class	Rated output (VA)
LMZ255-80-160	50/1	10P10	2
	75/1		2
	100/1		2.5
	150/1~400/1		5
	50/5		1
	75/5		1
	100/5		2.5
	150/5~400/5		5

Note: Any special requirements can be negotiated with us.

■ Outline drawing

LMZ255-80-160

